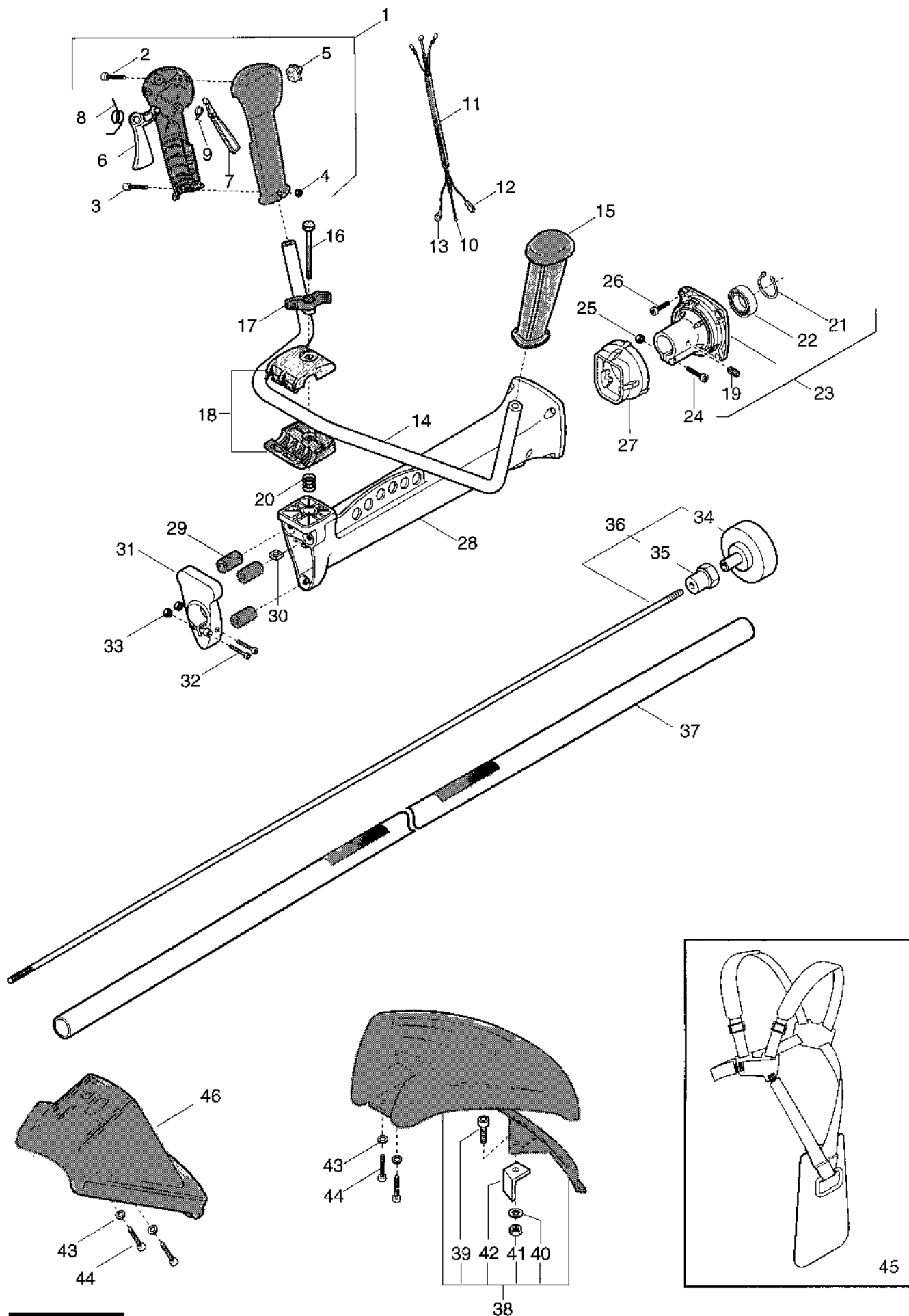
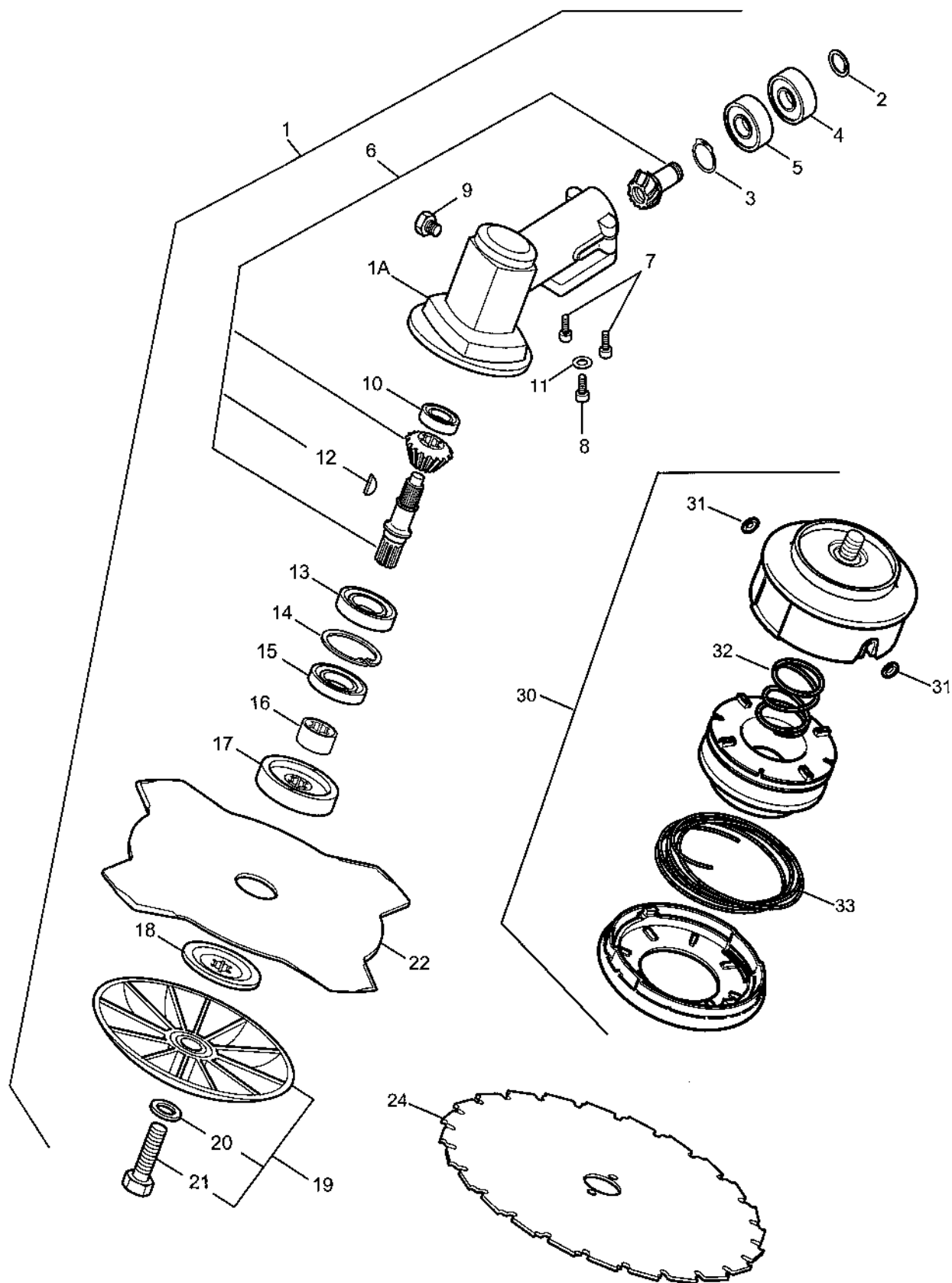


Genuine Spare Parts

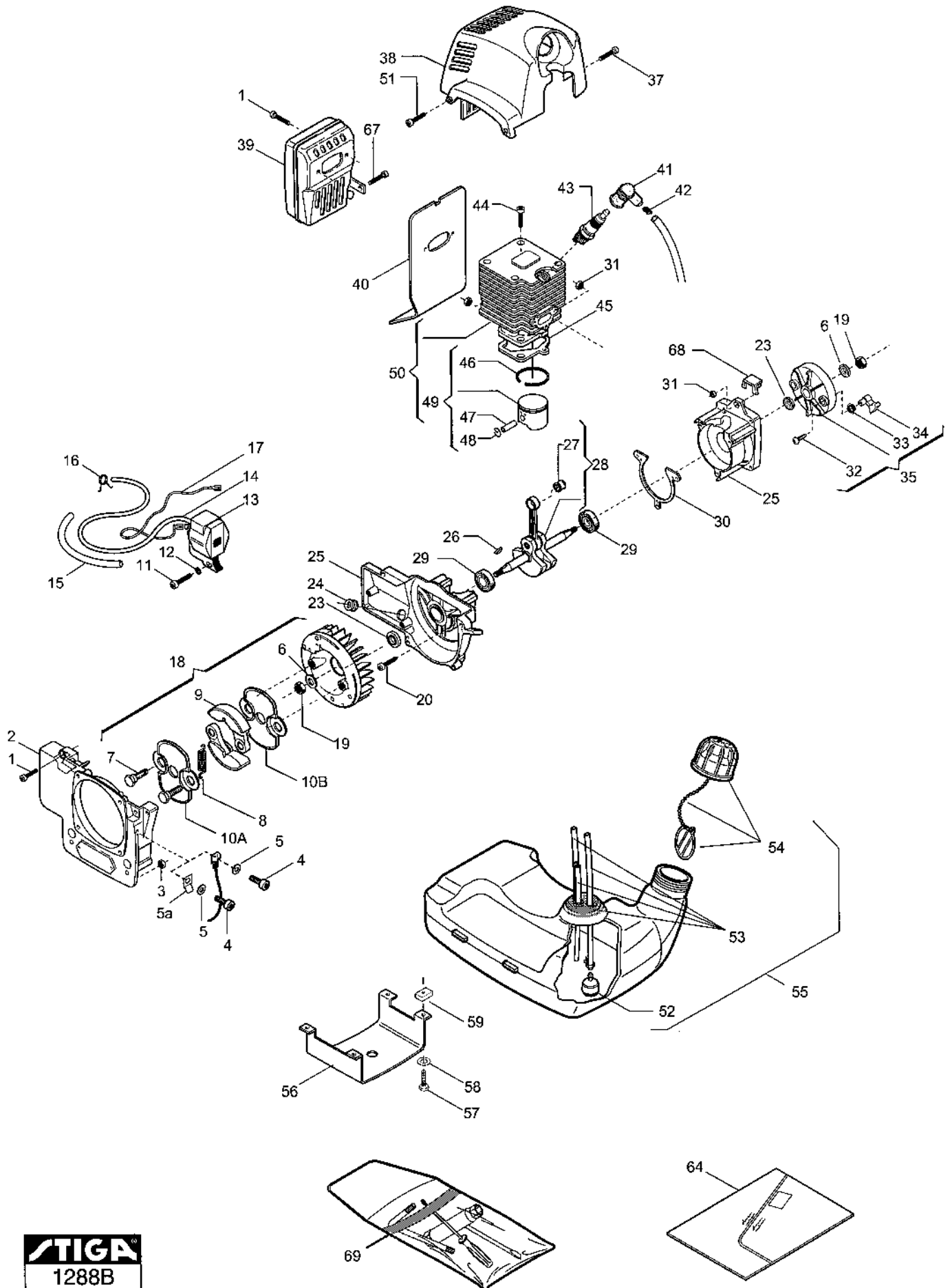




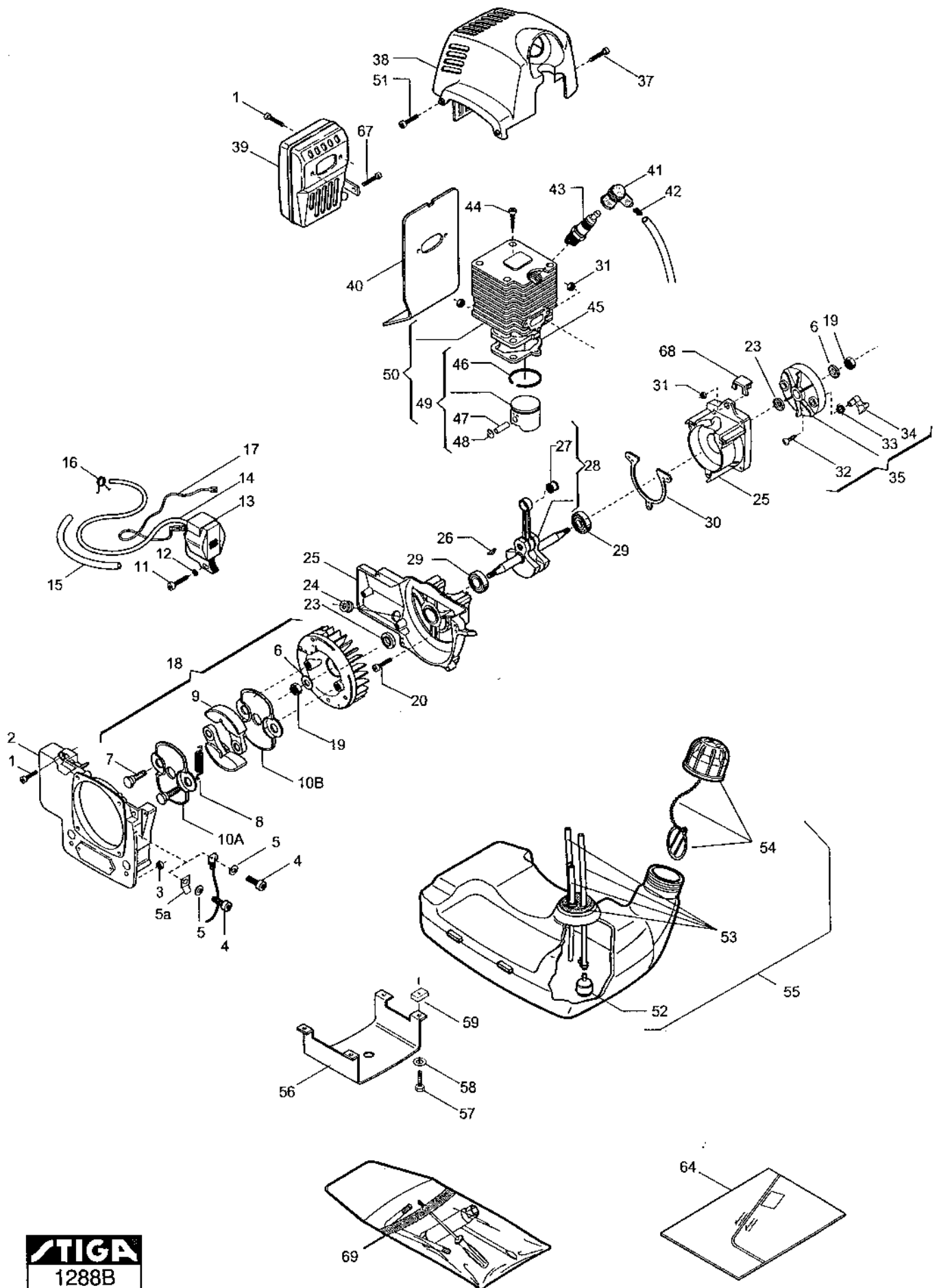
Utgåva Issue		Bildnr Picture No		SB 40- SB 44- SB 52 RÖJARE RIGG		SB 40- SB 44- SB 52 BRUSH CUTTER DRIVE SHAFT		Sida Page
2003- 43		1284						288
Pos. Fig.	Antal/Quantity			Art nr Part No	Benämning	Description	Sats Kit	Anmärkning Notes
	4629	6115 4630						
1	1	1		1911-3203-01	Handtag kpl	Handle assy.....		Inkl. pos 2 - 9
2	1	1		1911-3001-01	• Skruv	• Screw		
3	1	1		1911-3008-01	• Skruv	• Screw		
4	1	1		9747-0531-02	• Mutter.....	• Nut		
5	1	1		1911-3053-01	• Stoppkontakt	• Stop switch		
6	1	1		1911-3108-01	• Gasreglage	• Throttle lever		
7	1	1		1911-3109-01	• Säkerhetsspärr	• Safety lever		
8	1	1		1911-3089-01	• Fjäder	• Spring		
9	1	1		1911-3090-01	• Fjäder	• Spring		
10	1	1		1911-3146-01	Gaswire	Throttle wire		
11	1	1		1911-3133-01	Kabelskydd	Wire sheath		
12	1	1		1911-3061-01	Kabel- röd	Cable- red		
13	1	1		1911-3062-01	Jordkabel- svart	Earth cable- black		
14	1	1		1911-3722-01	Styre	Handle		
15	1	1		1911-3114-01	Handtag- vä	Knob- left		
16	1	1		1911-3000-01	Skruv	Screw		
17	1	1		1911-3123-01	Vingmutter.....	Wing nut		
18	1	1		1911-3192-01	Styrinfästning kpl	Handle support assy		
19	1	1		1911-3658-01	• Skruv	• Screw		
20	1	1		1911-3091-01	Fjäder.....	Spring		
21	1	1		1911-3066-01	• Låsring	• Lock ring		
22	1	1		1911-3035-01	• Kullager	• Ball bearing		
23	1			1911-3188-01	Transmissionsnav kpl	Transmission hub assy		Inkl. pos 19, 21 - 22 Inkl. pos 19, 21 - 22
23		1		1911-3189-01	Transmissionsnav kpl	Transmission hub assy		
24	1	1		1911-3011-01	Skruv	Screw		
25	1	1		1911-3021-01	Mutter.....	Nut		
26	4	4		1911-3012-01	Skruv	Screw		
27	1	1		1911-3111-01	Vibrationsdämpare- bak.....	Shock absorber- rear.....		
28	1	1		1911-3171-01	Transmissionshus	Transmission housing		
29	3	3		1911-3110-01	Vibrationsdämpare- fra	Shock absorber- front		
30	1	1		1911-3080-01	Handtagsfästmutter	Handle fixing plate		
31	1			1911-3172-01	Stöd- främre	Housing support- front.....		
31		1		1911-3173-01	Stöd- främre	Housing support- front.....		
32	2	2		1911-3009-01	Skruv	Screw		
33	2	2		9747-0531-02	Mutter	Nut		
34	1	1		1911-3134-01	• Kopplingstrumma.....	• Clutch.....		
35	1	1		1911-3083-01	• Lagernav	• Bearing hub.....		
36	1	1		1911-3140-01	Drivaxel kpl	Transm. shaft assy		Inkl. pos 34 - 35 D = 26 mm
37	1			1911-3139-01	Drivaxelrör	Transmission pipe		
37		1		1911-3142-01	Drivaxelrör	Transmission pipe		D = 28 mm Inkl. pos 39 - 42
38	1	1		1911-3201-01	Säkerhetsskydd kpl.....	Safety cover assy		
39	1	1		1911-3006-01	• Skruv	• Screw		
40	1	1		1911-3216-01	• Bricka	• Washer		
41	1	1		1911-3022-01	• Mutter.....	• Nut		
42	1	1		1911-3077-01	• Kniv	• Line cutter		
43	2	2		1911-3216-01	Bricka	Washer		
44	2	2		1911-3009-01	Skruv	Screw		
45	1	1		1911-3152-01	Sele	Harness		
46	1	1		1911-3166-01	Stenskydd (sågklinga)	Stone shield (saw)		
99	1	1		1911-3212-01	Skyddsglasögon	Protective goggles		Ej ill/not ill.



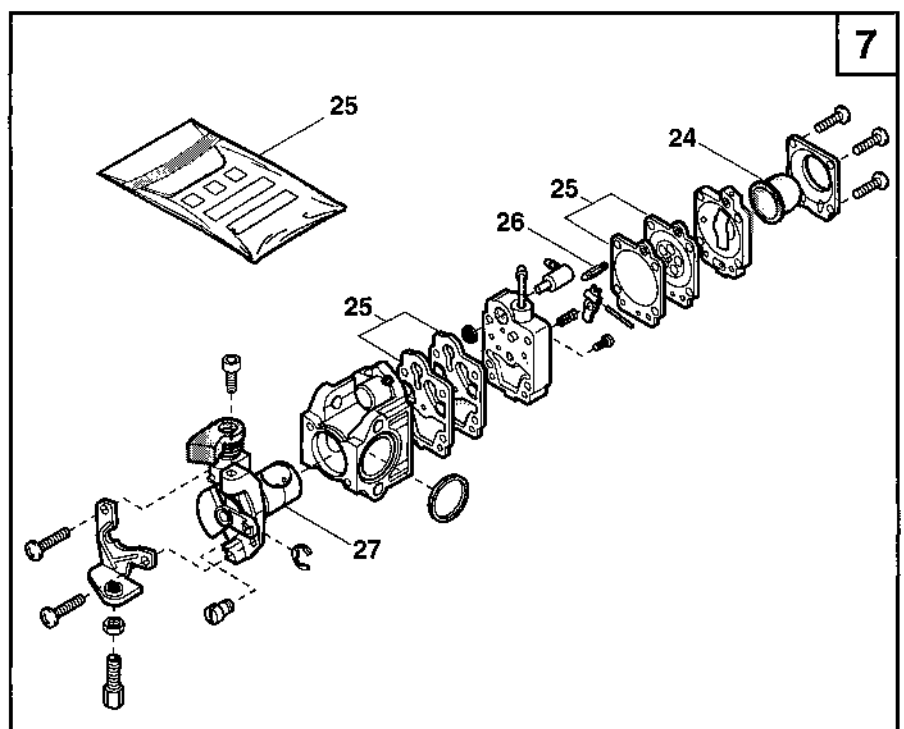
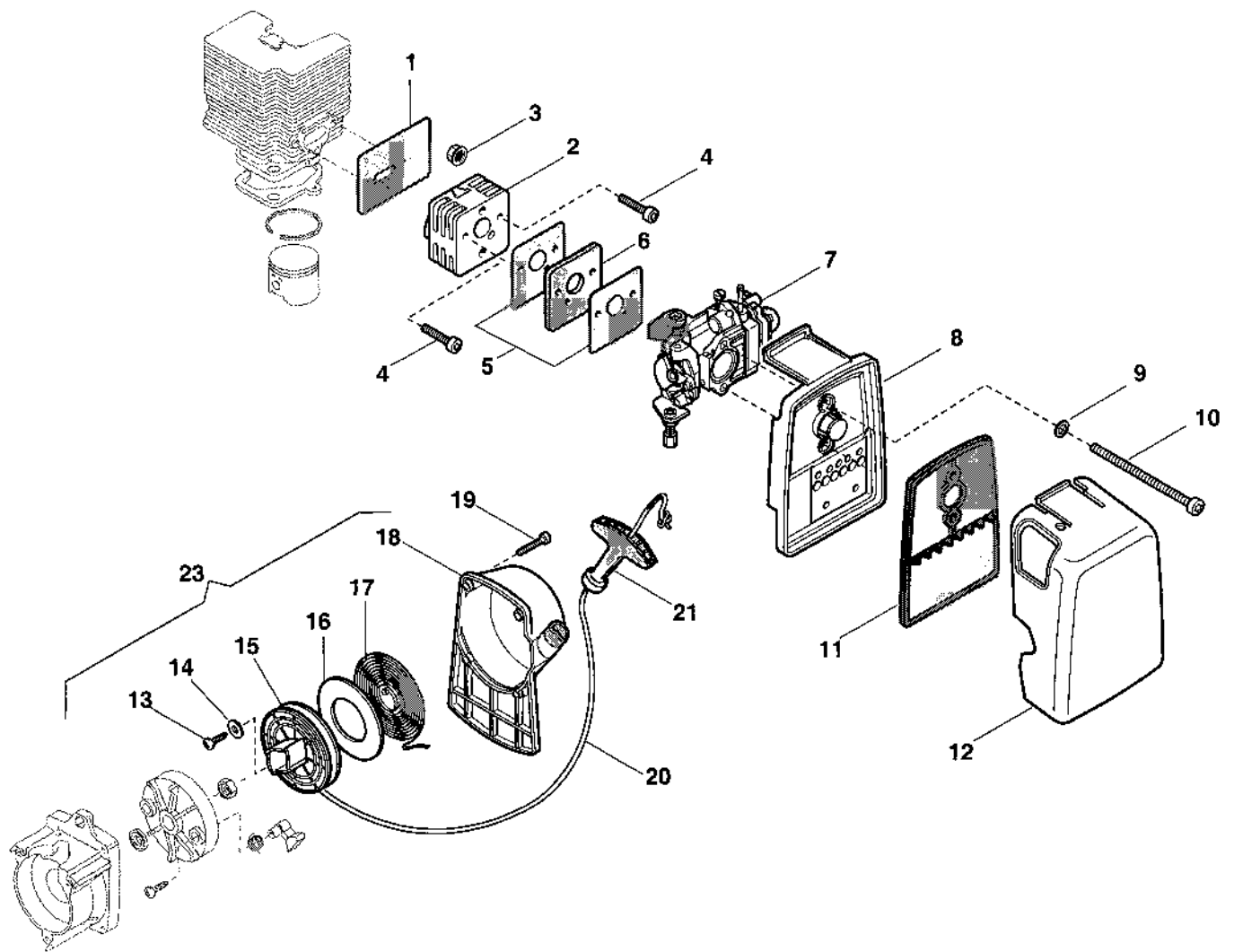
Utgåva Issue		Bildnr Picture No		SB 40- SB 44- SB 52 RÖJARE SNÄCKVÄXEL		SB 40- SB 44- SB 52 BRUSH CUTTER GEAR CASE		Sida Page
2003- 43		1285A						290
Pos. Fig.	Antal/Quantity			Art nr Part No	Benämning	Description	Sats Kit	Anmärkning Notes
	4629	6115 4630						
1	1			1911-3137-01	Snäckväxel kpl.....	Gear case assy		Inkl. pos 2 - 21
1		1		1911-3138-01	Snäckväxel kpl.....	Gear case assy		Inkl. pos 2 - 21
1A	1			1911-3161-01	Snäckväxelhus.....	Gear case		
1A		1		1911-3162-01	Snäckväxelhus.....	Gear case		
2	1	1		1911-3067-01	• Låsring	• Lock ring		
3	1	1		1911-3065-01	• Låsring	• Lock ring		
4	1	1		1911-3037-01	• Kullager	• Ball bearing		
5	1	1		1911-3036-01	• Kullager	• Ball bearing		
6	1			1911-3182-01	• Snäckdrev.....	• Worm gear		
6		1		1911-3183-01	• Snäckdrev.....	• Worm gear		
7	2	2		1911-3008-01	• Skruv	• Screw		
8	1	1		1911-3025-01	• Skruv	• Screw		
9	1	1		1911-3029-01	• Skruv	• Screw		
10	1	1		1911-3038-01	• Kullager	• Ball bearing		
11		1		1911-3015-01	• Bricka	• Washer		
12	1	1		1911-3049-01	• Kil	• Key		
13	1	1		1911-3034-01	• Kullager	• Ball bearing		
14	1	1		1911-3066-01	• Låsring	• Lock ring		
15	1	1		1911-3045-01	• Tätningsring	• Oil seal		
16	1	1		1911-3082-01	• Hylsa.....	• Collar.....		
17	1	1		1911-3081-01	• Ringmutter- övre.....	• Ring nut- upper.....		
18	1	1		1911-3070-01	• Ringmutter- nedre.....	• Ring nut- lower.....		
19	1	1		1911-3163-01	• Skål kpl (fast)	• Bowl assy (fixed).....		Inkl. pos 20 - 21
20	1	1		1911-3018-01	• Bricka.....	• Washer.....		
21	1	1		1911-3026-01	• Skruv (vå- gängad)	• Screw (LH- thread).....		
22	1	1		1911-3179-01	Röjklinga	Clearing blade		4T - Ø 255 mm
22A	1	1		1911-3850-01	Klingskydd.....	Blade guard		Ej ill/not ill.
24	1	1		1911-3181-01	Sågklinga.....	Saw blade		24T - Ø 225 mm
30	1	1		1911-3877-01	Skärhuvud kpl.....	Cutterhead assy		Inkl. pos 31 - 32
31	2	2		1911-3875-01	• Trådhylsa	• Line inlet		
32	1	1		1911-3876-01	• Fjäder.....	• Spring		
33	1	1		1911-9008-04	Skärtråd (2.4 mm)	Cutting line (2.4 mm).....		0.45 kg (90 m)
33	1	1		1911-9008-08	Skärtråd (2.4 mm)	Cutting line (2.4 mm).....		15 m
99	1	1		1911-3853-01	Fettub	Grease tube.....		Ej ill/not ill.



Utgåva Issue		Bildnr Picture No		SB 44- SB 52 RÖJARE MOTOR		SB 44- SB 52 BRUSH CUTTER ENGINE		Sida Page
2003- 43		1288B						296
Pos. Fig.	Antal/Quantity			Art nr Part No	Benämning	Description	Sats Kit	Anmärkning Notes
	4630	6115						
1	12	12		1911-3007-01	Skruv	Screw		
2	1	1		1911-3732-01	Transm.stödhus	Transm.support case		
3	4	4		1911-3023-01	Mutter	Nut		
4	1	1		1911-3005-01	Skruv	Screw		
5	1	1		1911-3016-01	Bricka	Washer		
5A	1	1		1911-3874-01	Flatstiftskontakt	Connector		
6	2	2		1911-3019-01	Bricka	Washer		
7	2	2		1911-3028-01	• Skruv	• Screw		
8		1		1911-3086-01	• Fjäder	• Spring		
8	1			1911-3088-01	• Fjäder	• Spring		
9		2		1911-3094-01	• Koppling	• Clutch unit		
9	2			1911-3095-01	• Koppling	• Clutch unit		
10A	1	1		1911-3078-01	• Kopplingsplatta- yttre	• Clutch guide plate- ou		
10B	1	1		1911-3079-01	• Kopplingsplatta- inre	• Clutch guide plate- in		
11	2	2		1911-3009-01	Skruv	Screw		
12	2	2		1911-3017-01	Bricka	Washer		
13	1	1		1911-3668-01	Elektronikspole	Electronic coil		
14	1	1		1911-3055-01	Tändstiftskabel	Spark plug cable		
15	1	1		1911-3128-01	Kabelhölje	Wire sheath		
16	1	1		1911-3092-01	Klämma	Clamp		
17	1	1		1911-3673-01	Jordkabel	Earth cable		
18	1			1911-3186-01	Svänghjul kpl	Flywheel assy		Inkl. pos 7 - 10
18		1		1911-3821-01	Svänghjul kpl	Flywheel assy		Inkl. pos 7 - 10
19	2	2		1911-3020-01	Mutter	Nut		
20	4	4		1911-3010-01	Skruv	Screw		
23	2	2		1911-3044-01	Tätningsring	Seal ring		
24	1	1		1911-3116-01	Gummihylsa	Grommet		
25	1	1		1911-3823-01	Vevhus kpl	Crankcase assy		
26	1	1		1911-3049-01	Kil	Key		
27	1	1		1911-3041-01	• Nålager	• Needle bearing		
28	1	1		1911-3185-01	Vevaxel kpl	Crankshaft assy		Inkl. pos 27
29	2	2		1911-3033-01	Kullager	Ball bearing		
30	1	1		1911-3098-01	• Packning	• Gasket		
31	5	5		1911-3022-01	Mutter	Nut		
32	2	2		1911-3002-01	• Skruv	• Screw		
33	2	2		1911-3087-01	• Fjäder	• Spring		
34	2	2		1911-3118-01	• Startspärr	• Starter hook		
35	1	1		1911-3824-01	Startkopp kpl	Starter cup assy		Inkl. pos 32 - 34
37	1	1		1911-3006-01	Skruv	Screw		
38	1	1		1911-3174-01	Cylinderkåpa	Cylinder cover		
39	1	1		1911-3136-01	Ljuddämpare	Muffler		
40	1	1		1911-3105-01	• Packning	• Gasket		
41	1	1		1911-3113-01	Tändstiftshylsa	Spark plug cover		
42	1	1		1911-3093-01	Tändstiftsfjäder	Spark plug spring		
43	1	1		9400-0258-00	Tändstift	Spark plug		Champion CJ7Y
44	4	4		1911-3009-01	Skruv	Screw		
45	1	1		1911-3099-01	• Cylinderpackning	• Cylinder gasket		
46	1			1911-3046-01	• • Kolvring	• • Piston ring		
46		1		1911-3303-01	• • Kolvring	• • Piston ring		
47	1			1911-3050-01	• • Kolvbult	• • Piston pin		
47		1		1911-3305-01	• • Kolvbult	• • Piston pin		
48	2	2		1911-3068-01	• • Låsring	• • Lock ring		
49	1			1911-3195-01	• Kolv kpl	• Piston assy		Inkl. pos 46 - 48
49		1		1911-3595-01	• Kolv kpl	• Piston assy		Inkl. pos 46 - 48
50	1			1911-3196-01	Cylinder kpl m.kolv	Cylinder assy w.pist.		Inkl. pos 49
50		1		1911-3596-01	Cylinder kpl m.kolv	Cylinder assy w.pist.		Inkl. pos 49
51	2	2		1911-3007-01	Skruv	Screw		
52	1	1		1911-3150-01	• Bränslefilter	• Intake filter		
53	1	1		1911-3209-01	• Slangtätning kpl	• Grommet assy		
54	1	1		1911-3207-01	• Tanklock	• Fuel cap		
55	1	1		1911-3147-01	Bränsletank kpl	Fuel tank assy		Inkl. pos 52 - 54
56	1	1		1911-3740-01	Fläns	Flange		
57	4	4		1911-3006-01	Skruv	Screw		



Utgåva Issue 2003- 43		Bildnr Picture No 1288B		SB 44- SB 52 RÖJARE MOTOR		SB 44- SB 52 BRUSH CUTTER ENGINE		Sida Page 298	
Pos. Fig.	Antal/Quantity				Art nr Part No	Benämning	Description	Sats Kit	Anmärkning Notes
	4630	6115							
57	4	4			1911-3007-01	Skruv	Screw		Inkl. pos 30, 40, 45
58	4	4			1911-3017-01	Bricka	Washer		
59	4	4			1911-3023-01	Mutter	Nut		
64	1	1			1911-3206-01	Packningssats	Gasket set		
67	1	1			1911-3013-01	Skruv	Screw		
68	1	1			1911-3701-01	Distans	Spacer		
69	1	1			1911-3723-01	Påse m.verktyg	Bag w.tools		



Utgåva Issue		Bildnr Picture No		SB 44- SB 52 RÖJARE START FÖRGASARE		SB 44- SB 52 BRUSH CUTTER STARTER CARBURETTOR		Sida Page	
2003- 43		1289A						300	
Pos. Fig.	Antal/Quantity				Art nr Part No	Benämning	Description	Sats Kit	Anmärkning Notes
	6115 4630								
1	1				1911-3106-01 Packning.....	Gasket.....			
2	1				1911-3124-01 Insugningsrör.....	Intake manifold.....			
3	2				1911-3032-01 Mutter.....	Nut.....			
4	2				1911-3010-01 Skruv.....	Screw.....			
5	2				1911-3107-01 Packning.....	Gasket.....			
6	1				1911-3132-01 Värmedistans.....	Heat block.....			
7	1				1911-3878-01 Förgasare kpl.....	Carburettor assy.....			WYJ309
8	1				1911-3211-01 Lufffilterfäste.....	Air filter holder.....			
9	2				1911-3015-01 Bricka.....	Washer.....			
10	2				1911-3014-01 Skruv.....	Screw.....			
11	1				1911-3127-01 Lufffilter.....	Air filter.....			
12	1				1911-3175-01 Lufffilterkåpa.....	Air filter cover.....			
13	1				1911-3002-01 • Skruv.....	• Screw.....			
14	1				1911-3071-01 • Bricka.....	• Washer.....			
15	1				1911-3165-01 • Linhjul.....	• Starter pulley.....			
16	1				1911-3100-01 • Skiva.....	• Disc.....			
17	1				1911-3176-01 • Starttjäder.....	• Starter spring.....			
18	1				1911-3204-01 • Starthus.....	• Starter recoil case.....			
19	4				1911-3007-01 • Skruv.....	• Screw.....			
20	1				1911-3129-01 • Startsnöre.....	• Starter cord.....			
21	1				1911-3479-01 • Starthandtag.....	• Starter handle.....			
23	1				1911-3149-01 Start kpl.....	Starter assy.....			Inkl. pos 13 - 21
24	1				1911-3115-01 Primer.....	Primer bulb.....			
25	1				1911-3157-01 Packning- membransats.....	Gasket- diaphragm set.....			
26	1				1911-3158-01 Reparationssats.....	Repair set.....			
27	1				1911-3727-01 Ventil.....	Floating valve.....			